



frog
environmental



Zoological
Society
of London



CRANE VALLEY
COMMUNITY
INTEREST COMPANY



Environment
Agency

Citizen Crane Year Nine Annual Forum

Agenda

- 10:00 Arrive and coffee
- 10:30 Greetings and Introduction from ZSL: Joe Pecorelli
- 10:35 Citizen Crane 2022/23: Rob Gray (CVCIC) and Richard Haine (Frog Environmental)
- 10:50 New Developments in Citizen Crane: Azra Glover (ZSL)
- 11:05 Q & A
- 11:20 Break
- 11:40 Smarter Water Catchments: Helena Soteriou (TW)
- 11:50 Community Engagement: Frances Bennett (LGOAL)
- 12:00 Harrow Streams: Leslie and Steve Bolsover (HNCF)
- 12:10 Action in Hillingdon: Dragana Knezevic (LB Hillingdon)
- 12:20 Q&A and discussion
- 12:45 Lunch

Crane Catchment Map & Monitoring Points



Citizen Crane 2022/23: Rob Gray (CVCIC) and
Richard Haine (Frog Environmental)

Project Features

1. Major pollution: 2011 and 2013
2. Monitoring started in 2014
3. Volunteer led (over 70 trained)
4. Project team: ZSL, FORCE & frog environmental
5. Steering Group: CVP, EA + TW (meet quarterly)
6. Annual Report and Forum
7. Outfall Safaris in 2016 and 2021
8. Led to UK's 1st urban SWC



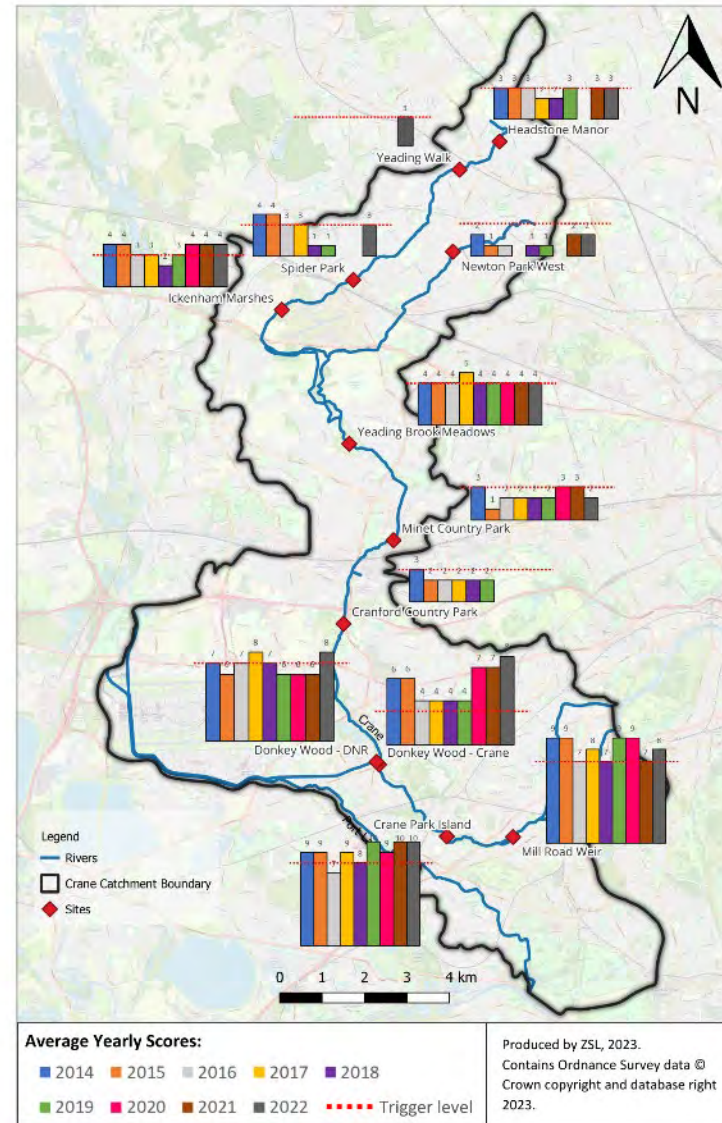
Project Findings to March 2022

1. Upper reaches poor
2. WQ improves downstream
3. Poor morphology in middle
4. Lower Crane near GES
5. SWOP + OS removed 100's of pollution sources
6. No overall improvement to the river



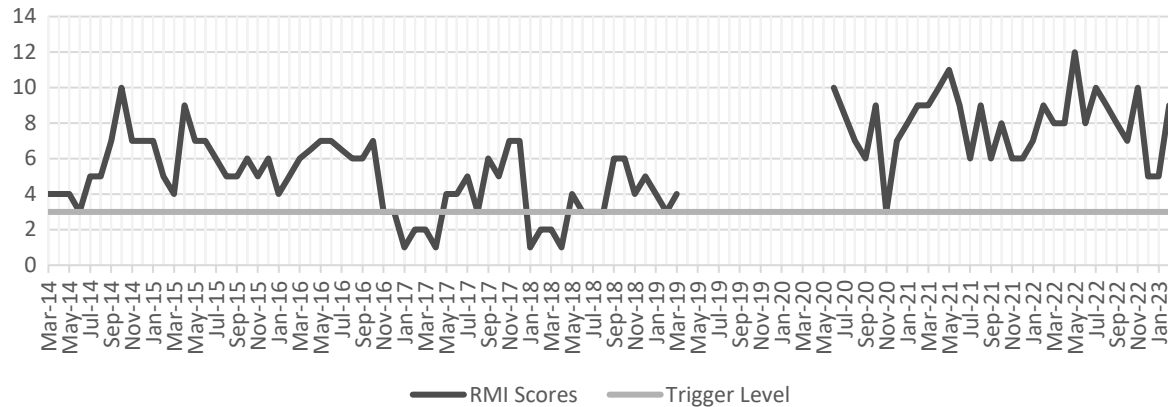
RMI for 2022/23

1. Nine years of data
2. Fairly consistent for each site
3. 2022/23 equal or better than the trend
4. First encouraging signs

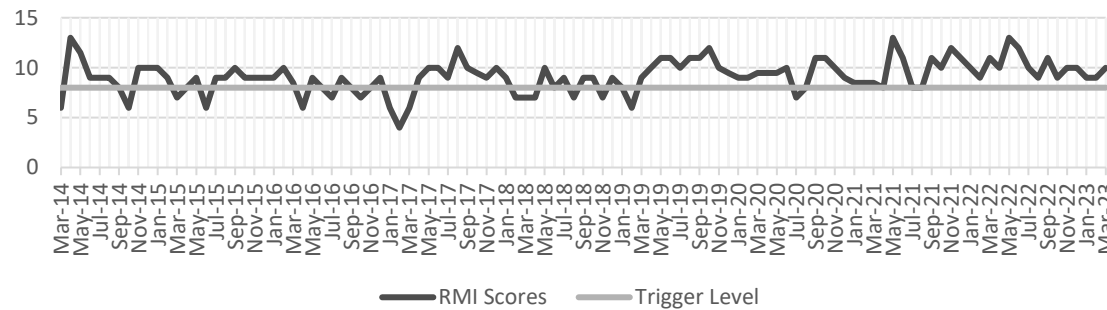


Heathrow Glycol Management

Site 9: Donkey Wood - Crane

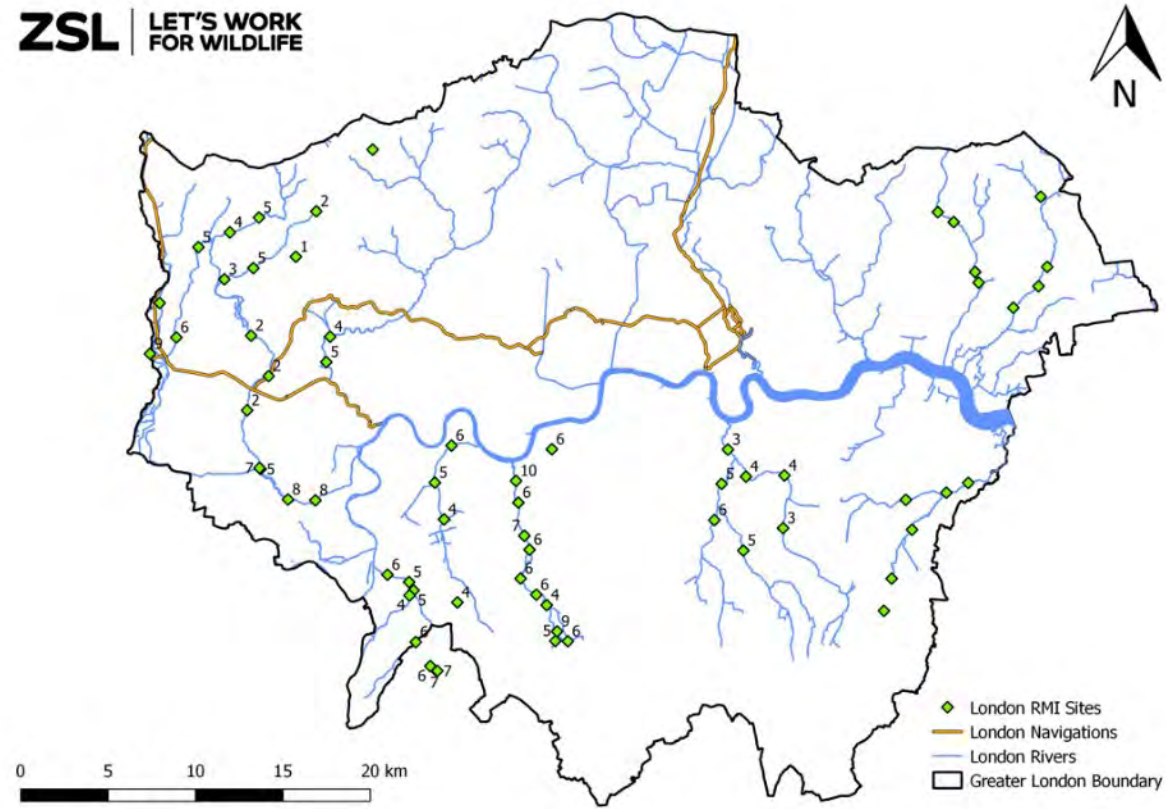


Site 11: Crane Park Island



RMI Data across London

ZSL | LET'S WORK FOR WILDLIFE



Crane Water Quality Data



Other Developments

1. SWOP
2. CSO's
3. Pollution Events
4. Yeading Brook East
5. CWG and CIG
6. WFD Classification



Waterbody	Parameter	2019	2022
CRANE	Ammonia (Phys-Chem)	Good	High
	Phosphate	Poor	Poor
	Dissolved Oxygen	Poor	Good
YEADING BROOK	Ammonia (Phys-Chem)	Bad	Poor
	Phosphate	Poor	Poor
	Dissolved Oxygen	Bad	Bad
PORT LANE BROOK	Ammonia (Phys-Chem)	High	High
	Phosphate	Moderate	Moderate
	Dissolved Oxygen	High	High



New Developments in Citizen Crane: Azra Glover (ZSL)



New Developments in Citizen Crane

Azra Glover

11/10/2023 Azra.Glover@zsl.org



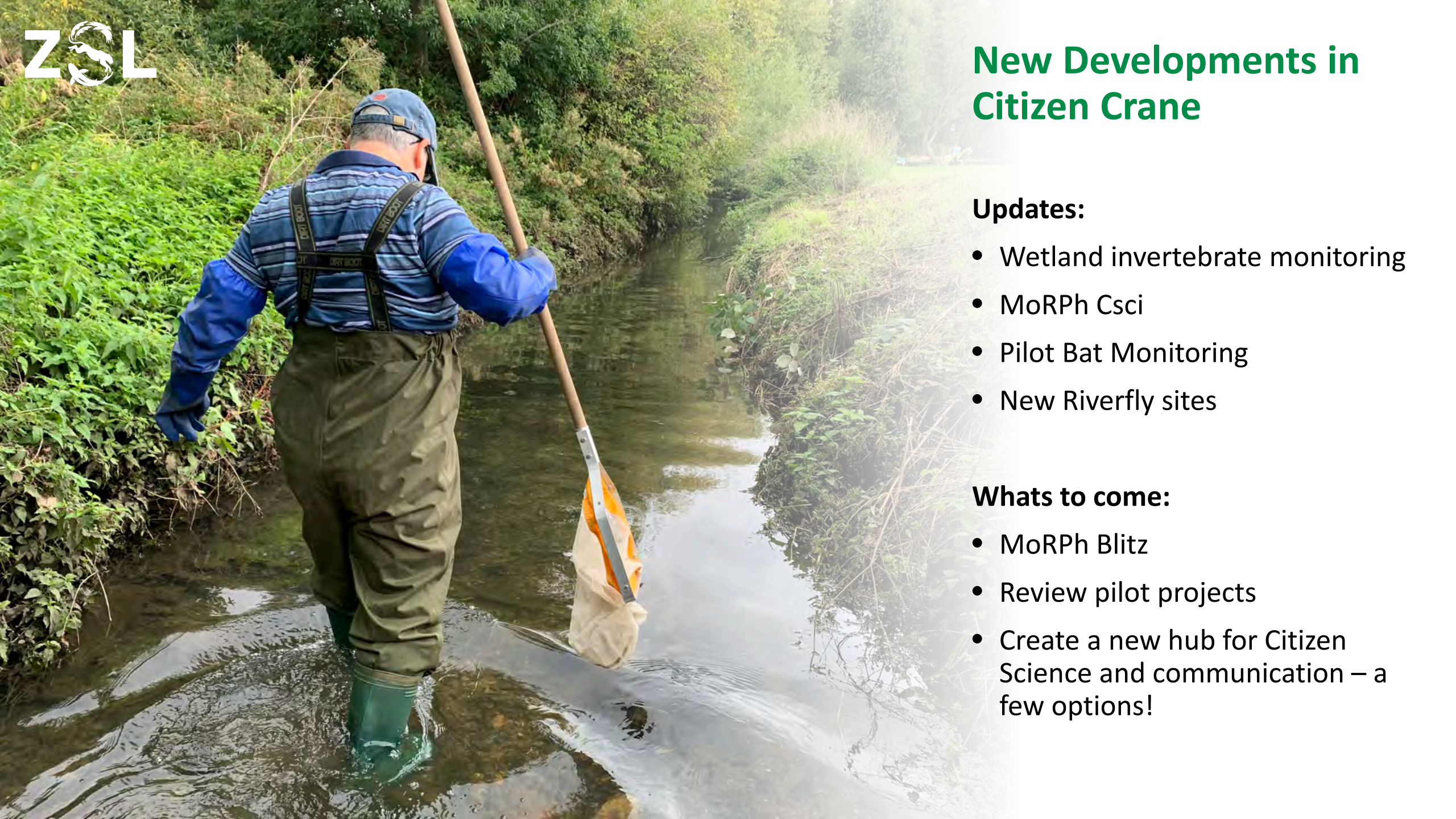
New Developments in Citizen Crane

Updates:

- Wetland invertebrate monitoring
- MoRPh Csci
- Pilot Bat Monitoring
- New Riverfly sites

Whats to come:

- MoRPh Blitz
- Review pilot projects
- Create a new hub for Citizen Science and communication – a few options!





Pilot Wetland Invertebrate Monitoring

Pilot Wetland Invertebrate Monitoring

Followed on from the recommendations and next steps of our project 'Evidencing the Impact of Constructed Wetlands: Headstone Manor Park' Report last year.

Aims:

- Develop and pilot a citizen science methodology that uses macroinvertebrate data as a proxy for water quality and pollution.
- Use the lessons learnt from this pilot to fine-tune the methodology for its use more widely in the assessment of constructed urban wetlands.

Launch Day:

On the 1st June, we were joined by 21 volunteers to put our new 'Constructed Wetland Invertebrate Monitoring' methods to the test at the Headstone Wetlands.

Timeline:

- Pre-pilot test run April 2023
- Run pilot June – December 2023
- Review and complete for consultation early 2024



Wetland Monitoring



- Groups of volunteers will go out monthly to take samples.
- Volunteers will conduct a 1-minute hand netting of marginal vegetation and rocks/substrates. Each sample will be scored, and data recorded on shared GoogleDocs

Taxa	Sensitivity	BMWP Score	Abundance			
			1-9	10-99	100-999	1000+
Mayfly (<i>Ephemeroptera</i>)	●	10 (4)	1	2	3	4
Caddisflies (<i>Trichoptera</i>)	●	5-10	1	2	3	4
Dragonflies and Damselflies (<i>Odonata</i>) - Dragonfly (<i>Aeshnidae</i>) - Damselfly (<i>Coenagrionidae</i>)	●	6-8	1	2	3	4
Freshwater Shrimp (<i>Gammarus</i>)	●	6	1	2	3	2
Freshwater Hoglouse (<i>Asellidae</i>)	●	3	1	1	0	-2
Leeches (<i>Hirudinea</i>)	●	3	1	1	0	-2
Fly Larvae (<i>Diptera</i>) - Non-Biting Midge Larvae (<i>Chironomidae</i>) - Mosquito larvae (<i>Culicidae</i>) - Drone fly larvae (<i>Syrphidae</i>)	●	-	1	1	0	-3
Worms (<i>Oligochaeta</i>)	●	1	1	1	0	-3

* Very Sensitive, Sensitive, Neutral, Tolerant, Very Tolerant = PSYM BMWP scores

Identification Guide (adapted from Anglers' Riverfly Monitoring Initiative (ARMI) guide)

Mayfly (<i>Ephemeroptera</i>)	Caddisflies (<i>Trichoptera</i>)	
	With a case	Without a case
<ul style="list-style-type: none"> 3 tails and 3 pairs of legs Feathery or small leaf like gills may be present along body. Antenna often visible <p>*Avoid confusing with: - damselfly larvae: both have 3 tails/gills projecting from end of body but damselfly much more robust</p>	<ul style="list-style-type: none"> No visible antenna Body enclosed within a case. Case made of small stones, sand grains, plant material or shells. Case may be round, square, or flat in cross section. One or more of the 3 pairs of legs may be visible when moving 	<ul style="list-style-type: none"> No visible antenna 3 pairs of legs visible 2 posterior hooks and anal proleg with terminal brush of long seta Tufted gills on abdominal segment May be inside web. <p>*Avoid confusing with: Chironomid midge larvae - often found inside a case, have no legs but walk using a soft peg near their head. Beetle larvae which have no hooks on the posterior appendages.</p>
Dragonflies and Damselflies (<i>Odonata</i>)		Freshwater Shrimp (<i>Gammarus</i>)
Dragonfly (<i>Anisoptera</i>) <ul style="list-style-type: none"> Gills are located inside the rectum (unlike those of damselflies, which extend from the hind end like 3 leaflike tails) Stout body, no tails but 5 short spines at the end of the body Large eyes 	Damselfly (<i>Zygoptera</i>) <ul style="list-style-type: none"> Three fin-like gills projecting from end and body slender/elongated. 3 sets of long legs Large eyes Range in colour from green to brown Slow crawling/climbing movement 	<ul style="list-style-type: none"> Body always curved and flattened side to side Swims on side More than 3 pairs of legs plus other appendages on the underside of body
Freshwater Hoglouse (<i>Asellidae</i>)	Leeches (<i>Hirudinea</i>)	Worms (<i>Oligochaeta</i>)
<ul style="list-style-type: none"> Looks like a woodlouse. Slow crawling movement Body dorsally flattened 	<ul style="list-style-type: none"> No legs Dorsally flattened Sucker present at each end of the body (uses these to move in looping motion) Often stuck to rocks - check tray and bucket as you empty Variety of shapes and colours 	<ul style="list-style-type: none"> Wiggle movement No legs with a long, thin, cylindrical body (15+) segments <p>*Avoid confusing with: - terrestrial worms: aquatic worms are a lot thinner and smaller. The head is indistinct and unlike terrestrial worms they lack a clitellum (raised band). - non-biting midge larvae</p>
Fly Larvae (<i>Diptera</i>)		
Mosquito Larvae (<i>Culicidae</i>) <ul style="list-style-type: none"> Fast wriggling movement Tend to remain at the surface of the water. Tube/siphon on end of body as well as anal segment with gills sometimes visible Large/bulbous head and thorax 	Non-Biting Midge Larvae (<i>Chironomidae</i>) <ul style="list-style-type: none"> Worm-like segmented shape. Distinctly separate head which is often darker than the rest of the body. Colouring can be tan, light green or clear, but some are red. 	Dronefly Larvae (<i>Syrphidae</i>) <ul style="list-style-type: none"> Long thin breathing tube (tail-like) Greyish, green, or pale brown in colour Slow moving

Data Collection & Communication



Google Docs

Wetland Invertebrate Monitoring Data Entry Form

DATE	TIME	SURVEYORS	CONDITIONS	LOCATION	Mayfly	Caddisflies (Trichoptera)	Dragonfly & Damselfly (Zygoptera & Anisoptera)	Freshwater Shrimp (Decapoda)	Freshwater Hoglouse (Amphipoda)	Leeches (Hirudina)	Fly Larvae (Diptera)
19/04/2023	12:30:00 PM	Azra & FoHMP	Sunny	INLET	0	0	0	8	65	2	53
19/04/2023	12:30:00 PM	Azra & FoHMP	Sunny	OUTLET	0	0	0	100	16	6	17
01/06/2023	10:40:00 AM	WaterBlitz	Overcast	INLET	0	0	0	1	5	0	123
02/06/2023	11:13:00 AM	WaterBlitz	Overcast	OUTLET	0	0	0	100	23	0	21



Padlet

azraglover · 14d

Citizen Science Wetland Invertebrate Monitoring

Resources | Data Entry | Chat | Contacts | Im

azraglover 14d

ID Guide and Scores (Larger Font)

Mayfly (Ephemeroptera)

3 tails and 3 pairs of legs
DOCK - ery or small leaf like gills may

Large Font ID Guide and Score Table

azraglover 14d

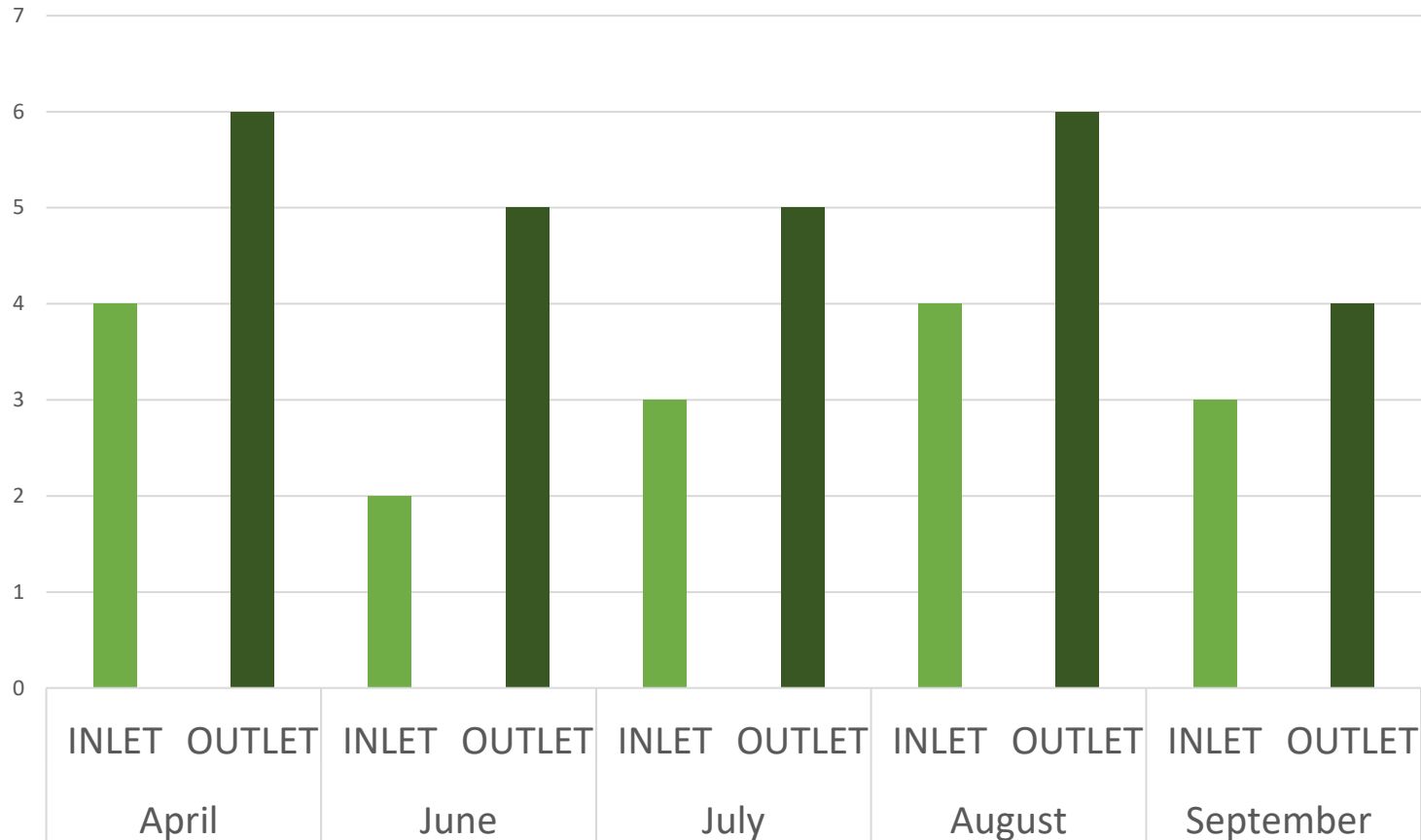
google docs
Wetland Invertebrate Monitoring Data Entry Form

azraglover 14d

Contact Details:
Azra Glover
Email: azra.glover@zsl.org
Phone: 07969424404

Padlet

Results so far...



Not seeing the same die-off that we saw last year

Generally higher scores at the outlet than the inlet

Average Scores
Inlet = 3
Outlet = 5

Cartographer & MoRPh CSci

The MoRPh Citizen Science is a bank-side method that records physical river features. The data collected can be used as evidence to help guide decision-making for river enhancements. This year we have worked with Cartographer to facilitate 2 training sessions – with over **20 volunteers** now trained in the Crane Catchment!

More MoRPh CSci training sessions in the upcoming months!

The first of these will take place on the **19th October**. The session will be a 1-day training at **Hounslow Heath Visitor Centre**.

More information about the training, what will be covered and how it can be used to help guide decision making in river restoration/improvement can be found here: <https://modularriversurvey.org/morph-rivers/>

Registration is required - To sign up or for more details , please contact: training@cartographer.io

If you are working within a catchment partnership or local volunteer group (with an interest in monitoring the hydromorphological function in your local river) then get in touch!



Bat Monitoring Pilot



Aims:

- Pilot a way of working with the community to collect analyse and store bat data for the CVP.
- Make recommendations about how volunteer groups may collect analyse and store bat data for the CVP and the support they will need to do so.

Who: Friends of Yeading Walk (Angelique, Alan & Simon)

Where: Yeading Walk on Yeading Brook West

When: Active bat period = April – End of September. Pilot will be run in August. Analysis and review in October.





Riverfly Updates



- 1 full year of data collected from Spider Park.
- New data being added in from the Longford River.
- New volunteers trained at a session hosted at Cranford Park - additional sites coming online soon!
- Another training session coming up on the Lower Crane.
- Citizen Crane Year 9 Report coming soon with updates on Riverfly data from this past year!



What's to come...

- Review pilot projects to potentially expand these across the catchment or find alternatives for gathering data.
- Expand our work with Citizen Scientists – hosting new events/training session across the catchment that we would love your thoughts on!





MoRPh CSci Blitz Days

- Bring together all MoRPh citizen science trained volunteers to survey key sites in the Crane catchment.
- Twice a year at sites that have either recently undergone improvement/restoration works or at sections of river for which these have been planned.
- Work as a group with the help of Cartographer to systematically sample a section of river to help monitor the impact of river enhancement work and future maintenance & decision making.

<https://www.menti.com/al5ht6bk4175>



Password: 3826 3670

**Ideas for new ways to communicate & team up
across the Crane!**

Options for Improved Communications



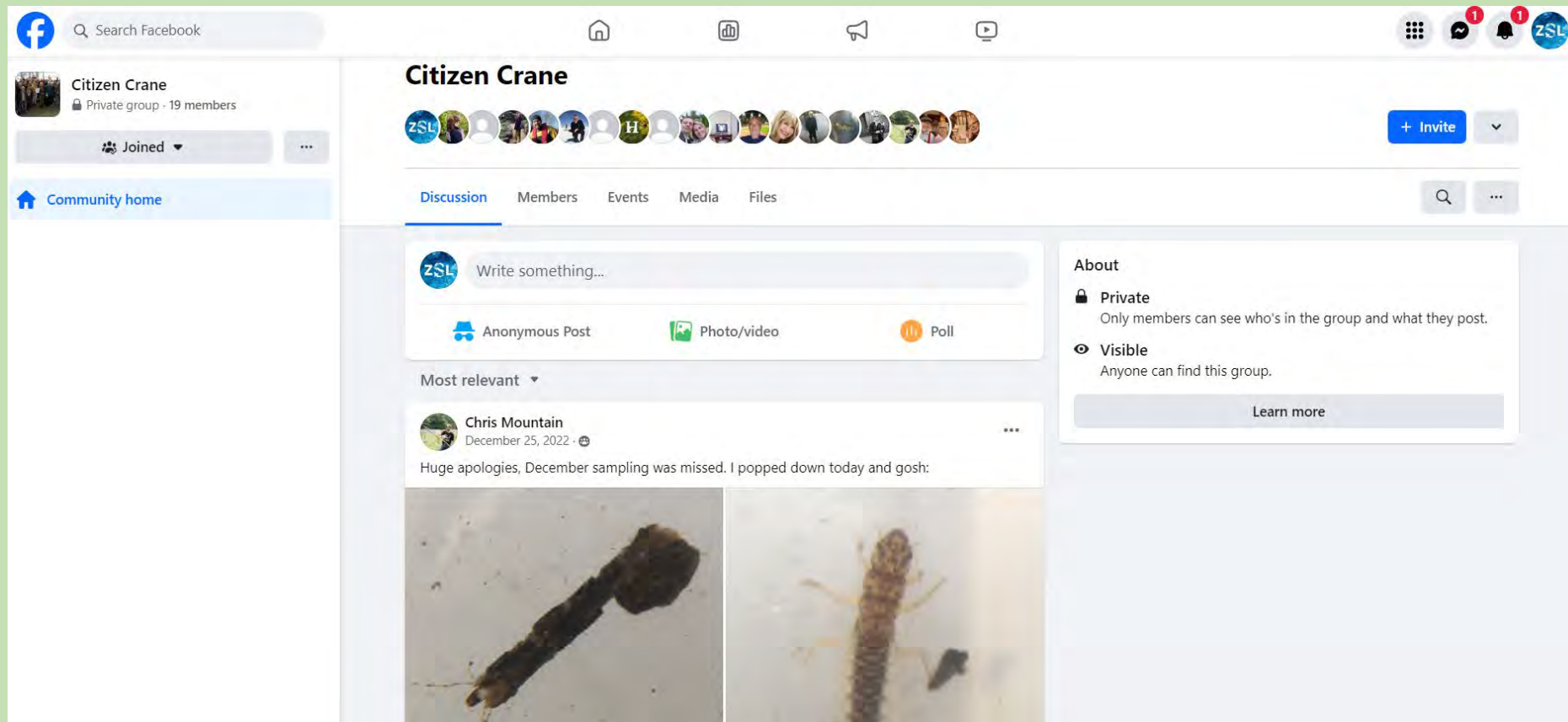
Mentimeter Survey:



Password: 3826 3670

<https://www.menti.com/al5ht6bk4175>

Improve our communications via the existing Facebook Page:



Options for Improved Communications



Padlet

Mentimeter Survey:



Password: 3826 3670

<https://www.menti.com/al5ht6bk4175>

Padlet

azraglover • 2mo

Citizen Science Wetland Invertebrate Monitoring

Resources Data Entry Chat Images

azraglover 2mo

Background & Protocols (includes kit checklist and methods)

Taxa	Abundance			
	1-9	10-99	100-999	1000+
Mayflies	1	2	3	4
- Ephemerellidae				
- Ephemerellidae				
- Heptageniidae				
- Stoneflies	1	2	3	4
Cased Caddis	1	2	3	4
Caseless Caddis	1	2	3	4
Beetles	1	2	3	4
Dragonfly (Anisoptera)	1	2	3	4
Damselfly (Zygoptera)	1	2	3	4
Crustaceans	1	1	1	0
DOCX Water Shrimp (Amphipoda)	1	2	3	2
DOCX Water Shrimp (Amphipoda)	1	2	2	0

Follow up Invert Monitoring (background)

azraglover 3mo

Data Entry Spreadsheet

Wetland Invertebrate Monitoring Data Entry Form

Please enter your monthly data to this spreadsheet. You can flick

azraglover 2mo

Any questions about ID'ing, health and safety, or just a general chit chat - then here is the space for it! (Be sure to turn on notification settings if you want to be alerted when someone posts or replies to your post!)

azraglover 2mo

We are always on the hunt for fun pictures out in the field!

Chess Citizen Science Portal



The screenshot shows the Chess Citizen Science Portal interface. At the top left is a dark blue sidebar with navigation icons and labels: Dashboard, Activities, Discussions, News & Events, and My Settings. The main content area is divided into three columns: 'Latest News Headlines' with three articles, 'Upcoming Events' with three events, and 'Latest Discussion Threads' with three threads. A 'Back' button is visible above the 'Activity' section. The 'Activity' section shows a comment from 'BirdWatcher101' and a reply from 'AvianAce'. Below the activity is a list of documents: 'MudSpotter methods', 'MudSpotter Survey Sheets', and 'Title of document - PDF'. A 'Risk assessments' section is also visible.

Mentimeter Survey:



Password: 3826 3670

<https://www.menti.com/al5ht6bk4175>

Have your say!

- Question 1:

Would you be interested in being part of a new online citizen science platform to improve communication between volunteers and with Citizen Crane?

- Question 2:

Do you have any ideas for new surveys/ citizen science activities that you would like us to look into?

<https://www.menti.com/a15ht6bk4175>



Password: 3826 3670

A photograph of two people participating in a field study in winter. On the left, a woman with blonde hair, wearing a dark winter jacket and a red and white Santa hat, is smiling and talking on a black mobile phone. On the right, a man wearing a grey knit beanie, glasses, a dark jacket, and a scarf is kneeling. He is wearing white and orange work gloves and is holding a small dark bottle, pouring its contents into a white plastic container. The ground is covered in a light layer of snow. In the background, there are some buildings and bare trees under a clear blue sky. A green semi-transparent banner is overlaid across the middle of the image, containing the text 'Thanks to all our project partners and wonderful Citizen Scientists!'. Various pieces of equipment, including a yellow bag, a white bucket, and a blue and white cooler, are scattered around the man.

Thanks to all our project partners and wonderful Citizen Scientists!



For more information about the work being carried out in the Crane and to read some of the other reports that have been produced please visit the **CVP's Project Archive** hub.

Any questions about this project or how to get involved please contact: azra.glover@zsl.org

And special thanks to:



Smarter Water Catchments: Helena Soteriou (TW)



It's everyone's water

Benefits of the Smarter Water Catchments approach

Helena Soteriou

Head of River Catchment Strategy



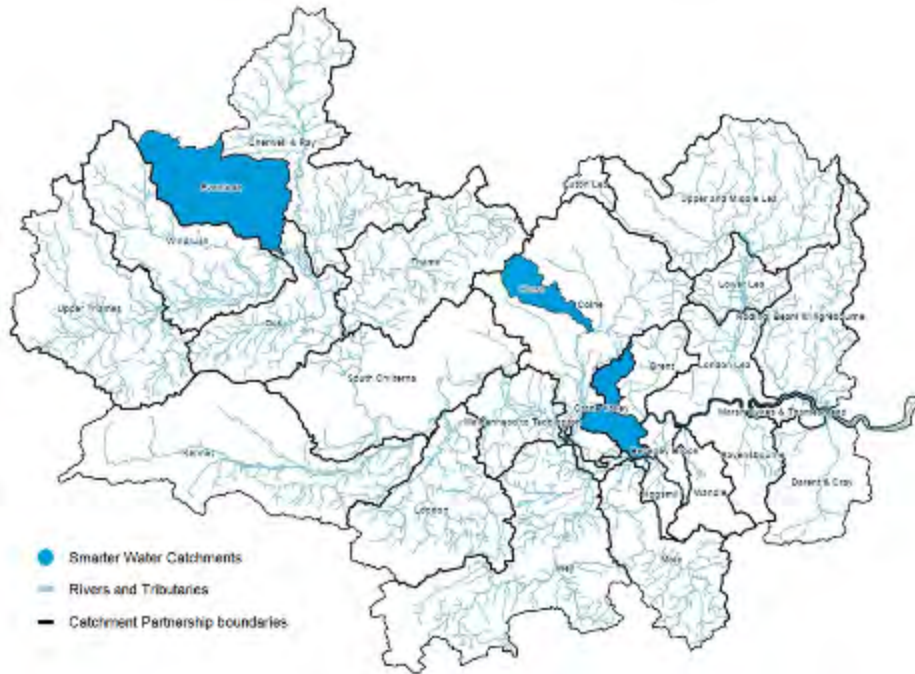
This presentation will cover:

1. Quick recap on the aims of the Smarter Water Catchments trials
2. Stakeholder feedback
3. What types of benefits are we seeing?
4. What's next?



What is the purpose of the Smarter Water Catchments trials?

A series of Thames Water pilot projects looking at the environment as a system and working in closer partnerships to co-create & co-deliver innovative solutions to our greatest challenges



We're investing **£9m** from 2020-2025 in CaBA to trial new ways of working to improve the health of our river catchments

- Develop deeper understanding of challenges
- Determine requirements to facilitate co-delivery
- Explore co-funding opportunities
- Set a precedent for future ways of working across the water industry
- Inform better decision making & future investment



Click [here](#) to access the plan.

Stakeholder feedback

Ways of working

Every catchment has different challenges but supports the CaBA model and Steering Group/Working Group set-up

Dedicated resources to the partnership are required

Documenting all governance processes for current and new members

Monitoring, analysis and evaluating success

Early baseline monitoring 12 months pre-project delivery across a range of parameters

Analysis should inform the end goal and support milestone development

Milestones in the Catchment Plan should be SMART, and outcome focussed

Project Delivery

Agree on common vision/goal at start

Quick wins from the outset to obtain wider buy-in

Factor in project development time into the planning phase

Implement own initiatives as well as partnership ones (showing commitment)

Funding

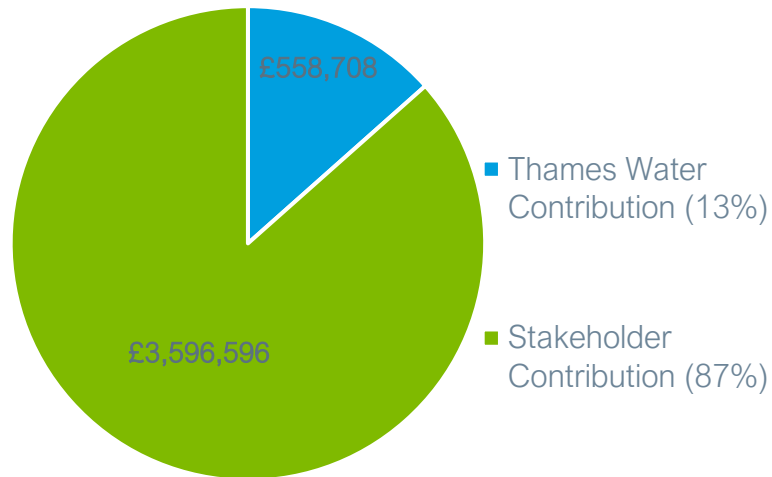
Multitude of match funding sources available for projects

Defined % co-funding contribution for projects

Utilise 3rd party organisations to support with grant management and disbursing funds

Investing in CaBA delivers results

Results taken from 35 projects being delivered in the Crane catchment (up to June 2023)



5 new jobs created



4 Heritage sites restored



9ha Habitat restored



11,054
volunteer hours



148 events
held



1,049 participants
engaged



What's next?

1. Undertake benefits assessments for projects post June 2023 and add data to the current baseline
2. Continue to deliver projects (through Project & Community Funds) which align to the themes and objectives of the Crane Valley's Catchment Plan
3. Demonstrate progress of Smarter Water Catchments to our partners
4. Use stakeholder feedback and insight to develop future ways of working; to improve both the current programme and future work beyond 2025





It's everyone's water

Community Engagement: Frances Bennett (LGOAL)

Crane Smarter Water Catchment: Reaching further

2023-2024

Working in partnership



Key aims for Community Engagement and Access

The community theme of the Smarter Water Catchment initiative aims to:

- achieve widespread recognition that the river corridors are valued by local communities and policymakers.
- place every section of the river corridors under community stewardship.
- establish an unbroken Crane Valley trail with visitor facilities at regular intervals.
- and encourage public use of the river corridor for recreation and health/wellbeing.



Challenges to broadening our reach



Cranford Bridge where the A4 Bath Road crosses the River Crane and industrial units around Heathrow beside river Crane.



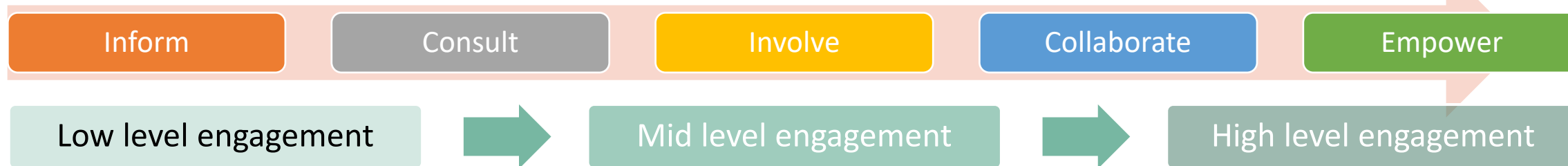
- The catchment is largely urban, covers five West London boroughs and is home to over 650,000 people.
- Areas of both affluence and deprivation, some with both high deprivation and demographic churn.
- The river corridors are crossed by several major highways (including the M4, M40 and A30).
- Many commercial and light industrial areas, including much of Heathrow perimeter, with few opportunities for community stewardship.
- Gaps in the geographical coverage of community stewardship coincides with significant infrastructure such as main roads, and business/industrial estates. This is particularly noticeable on the upper Duke of Northumberland's River and Eastern arm of Yeading Brook.

Opportunities for public engagement and awareness

The Crane Smarter Water Catchment will only result in a better functioning river catchment by working collaboratively to meet common aims with identified audiences - local decision-makers, local people, organisations and businesses.

The **Public Engagement Strategy 2022-2023** developed by LGOAL and H&H made recommendations to encourage, engage and to benefit a wide range of audiences.

Model of engagement



Developing a Public Engagement Strategy

The development of a Strategy which includes an annual strand.

Supporting capacity building

The development of a network to communicate, share best practice and targeted advice.

Incubating new community stewardship

Fostering environmental stewardship in the geographical gap areas.

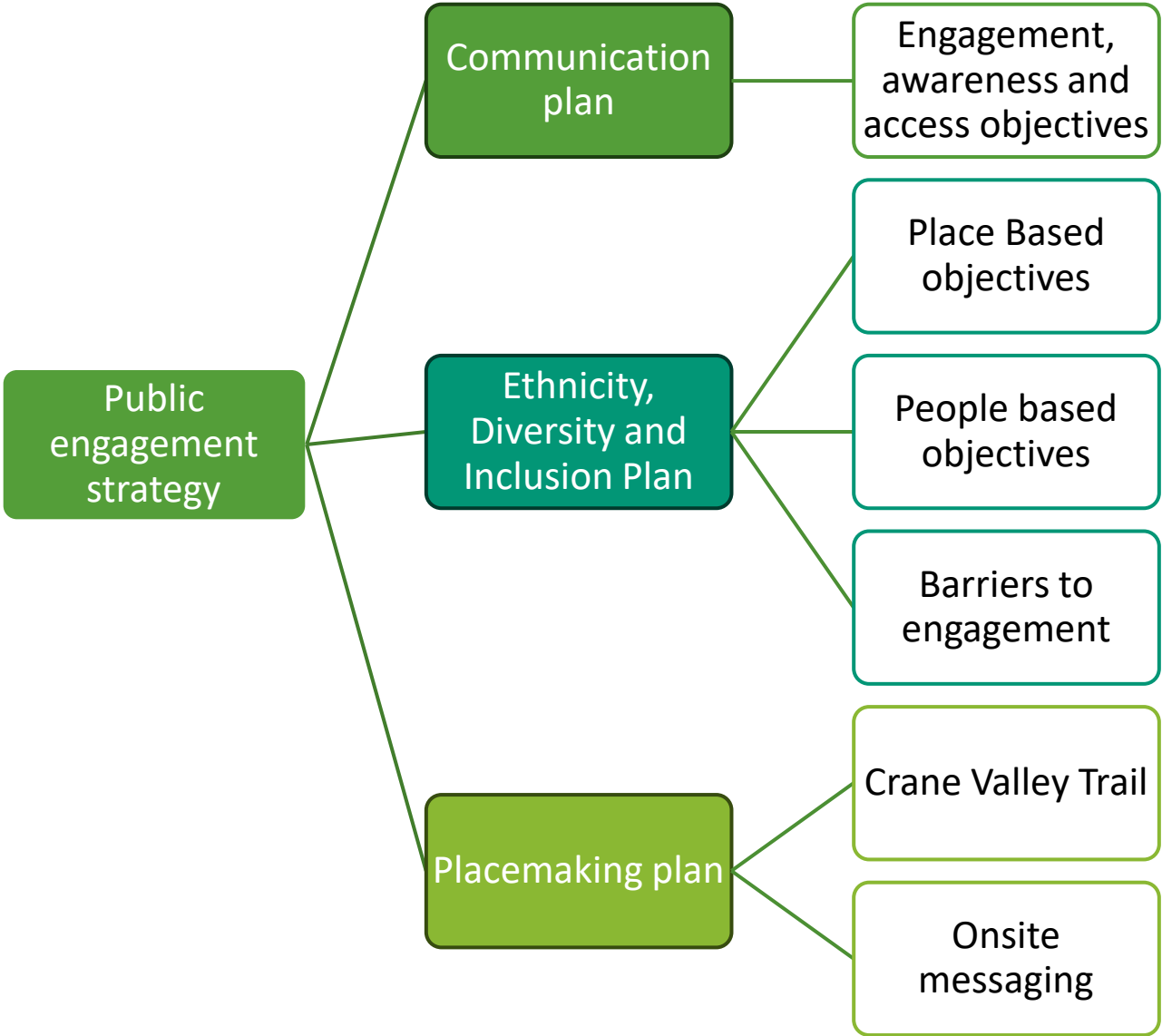
Working with new audiences

New audiences engaged and identified.

Easy access to funding

The Crane Project Fund and Crane community fund launched 2022.

Opportunities for public engagement



Diversity, equality and inclusion plan

The plan includes 2 different approaches:

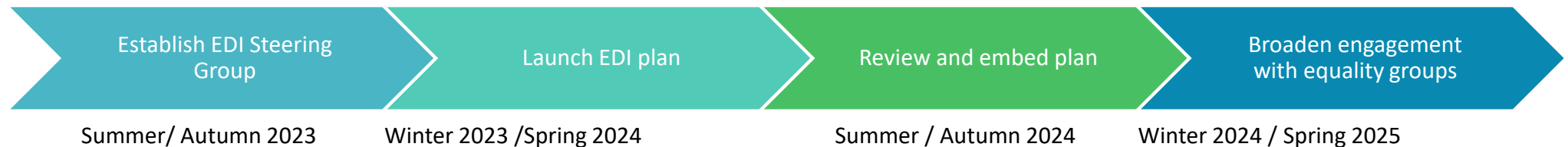
Place-based approach to encourage greater accessibility to the green and blue spaces of the catchment for those who face to barriers in accessing green spaces and a recommendation to nurture community engagement with public open spaces so that they are accessible, and people feel safe.

People-based approach based on equality, diversity and inclusion for people who identify with one of the equality groups.

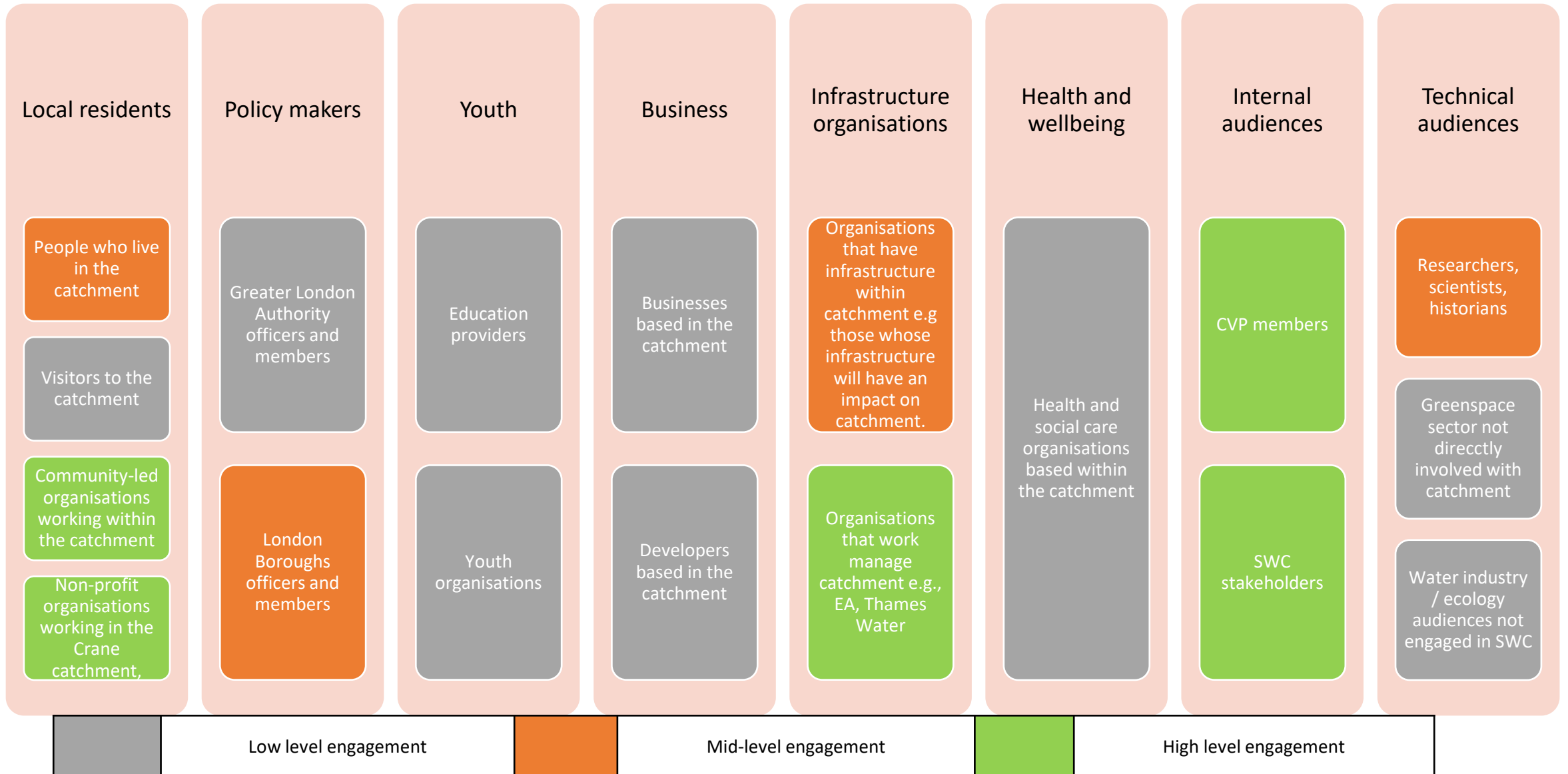


Priorities

- Establish a steering group to oversee implementation of EDI plan & approach. Please get in touch if you are interested in getting involved.
- Develop an evidence base to understand barriers to engagement
- Encourage engagement with community groups that reflects the demographics of the catchment
- Develop opportunities for health, education, learning and employment for all within the green/blue spaces of the Crane catchment.
- Encourage community stewardship with a focus on citizen science, “Friends of” groups and local businesses.

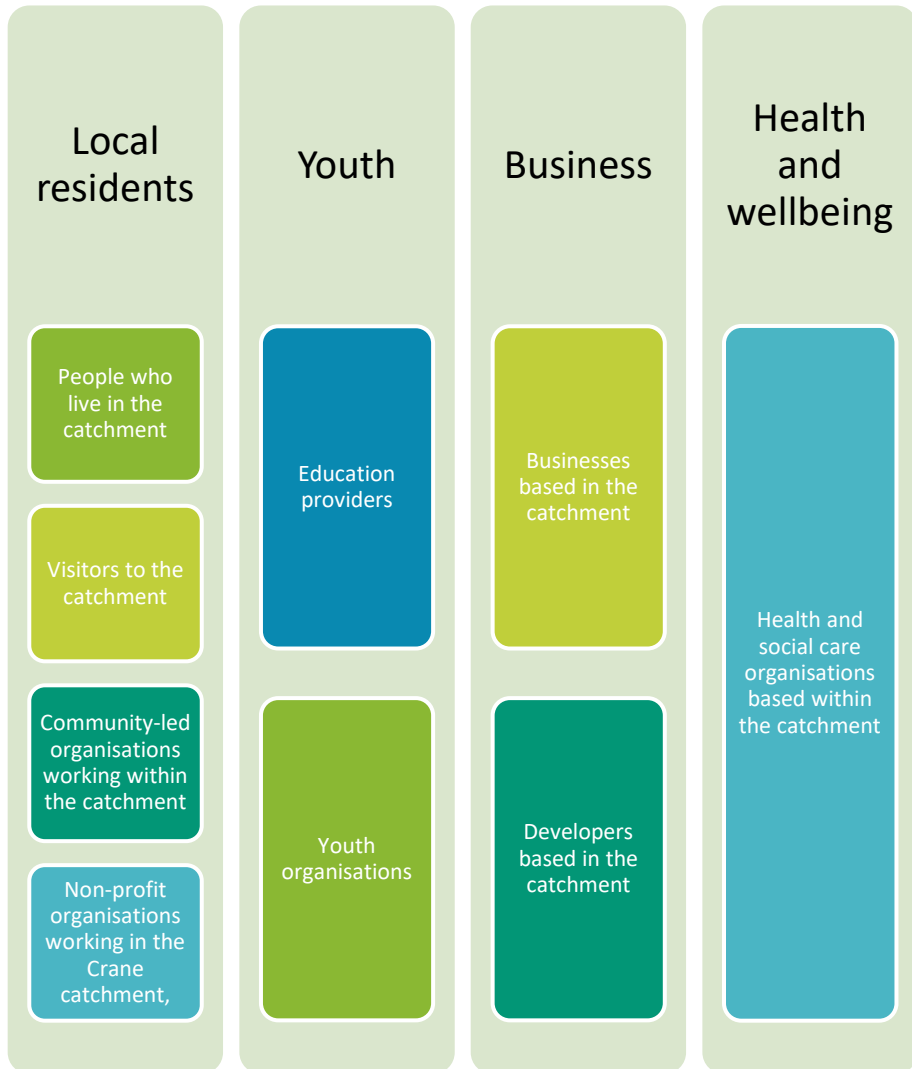


Key audiences for engagement



Reaching new audiences – Local residents and visitors

Audiences for focus 2023/4 are:



Engaging local residents/visitors to the catchment in 2023:

- Leaflet encouraging exploration of the catchment – 12 things to do in the Crane Valley www.lgoal.org.uk/currentprojects
- Community event 21st October Celebrating the Crane Kneller Gardens. Includes a consultation by Sustrans and family activities. Contact mairi.mcleod@lgoal.org.uk if you would like a table or material displayed in the marquee
- Roadshow to public spaces outlining SWC and how to get involved (contact Silvia.Canalini@lgoal.org.uk for more information or if you know of an appropriate space)
- Community forum led by Habitats and Heritage. Dates: Tuesday 7th November evening - on line and Tuesday 6th February 2024 evening. (Contact stephen@habitatsandheritage.org.uk)
- Supporting existing and new community stewardship groups to grow their capacity and promote best practice.
- Supporting applications to the community fund <https://www.groundwork.org.uk/london/the-crane-valley-grant-programme/>
- Citizen Science workshops in partnership with ZSL

LET'S GO
OUTSIDE AND
LEARN

CELEBRATING THE CRANE

Join us to learn more about what is
happening in the Crane Valley from
Harrow to Isleworth

Tell us what you think about our plans for
a Crane Valley Trail

There is something for everyone
Please come along and have some fun

Storytelling, Drumming Workshops
Street Art Graffiti, Willow Weaving,
Autumn Arts & Crafts
Silent Disco Litter Pick,
Treasure Hunt and Tug of War

**SATURDAY
21 OCTOBER 2023**

11.30am
to
3.00pm

VENUE: KNELLER GARDENS, TWICKENHAM



FOR FURTHER INFORMATION:
INFO@LGOAL.ORG.UK
FRANCES 020 8401 6837
MAIRI 07939001731



www.lgoal.org Facebook: LetsGoOutsideandLearn Twitter: @LetOutside CIC Registration number 9435120

12 Things To Do In The Crane Catchment

Did you know there are loads of things you can do outdoors in the Crane Catchment? The catchment contains several waterways including the Reading Brook, the River Crane and the Duke of Northumberland's River. There are lots of associated green spaces.

We have created a list of activities and challenges to try in the Crane Catchment's many parks and green spaces. Do these for leisure, to learn and to support you health and wellbeing. There's one for each month of the year but you can do them whenever you like. Look for the activity sheets which explore these ideas further.

Explore

Try taking a compass bearing and find out what you think it leads to. With a spirit level you can check if you're level.

Capture the Scene

Take water photos, paint or draw scenes inspired by the green spaces in them. Share on a forum or post your favourite photos. If you didn't think of social media, we'd love to see them.

Be active!

Swimming outdoors is great for your health and wellbeing. There are loads of places to swim, such as at plant ponds in the catchment. Lighten up and swim to get to work, school, the shops. Why not start friends using a green route (using the river corridor)?

Heritage Hunt

The Crane catchment has a fascinating history. There's lots to learn about the river, great history and the Crane and Duke of Northumberland's River. Have you been to the nearest historical site? Or explored the ancient oak plantation at Uxbridge Park or the Iron Age at Slough Hill Field?

Enjoy

Explore the river corridor and take a picnic. Enjoying a picnic is a great performance for you to have in your life. What are your favourite? Take your friends and family to this truly beautiful place.

Make your map

What would your ideal map of the Crane catchment look like? It could include all the places that you like. It could include all the places that you like to visit. It could include all the places that you like to visit. It could include all the places that you like to visit.

Volunteer

Doing jobs in the area is a great way to help others, be part of a community, learn new skills, and make a difference. There are lots of opportunities to get involved in the green spaces and the river.

Join the Community

Make contact with your local group. There are plenty of community activities and events in the catchment such as talks, community events, and other events. If you don't have a local group you can contact us to find out what's going on. info@lgoal.org

Share

Tell your friends and family about the catchment and its green spaces. This is part of the plan to improve the catchment. Make friends to travel along with you for a walk, cycle ride or picnic. Or just come along to the meetings, visit the website or get in touch with us. info@lgoal.org

Get close to nature

Connect with the living world by exploring the wildlife corridor through the river. It's a great way to get bird watching, or just to enjoy a green space and enjoy the experience.

Work on your wellbeing

Spending time in the catchment is a great way to improve your wellbeing. Go for a walk, run, or get out and watch the world go by. Meet friends and family, talk to park users, and enjoy being there, no matter what. info@lgoal.org

Discover

Find out more about your catchment. Look at maps to see where the river is and go. Research the plants and animals of places you've been to. Explore the river. Find out more about the wildlife and the history of the catchment. info@lgoal.org

Reaching new audiences - Citizen Science workshops Cranford

Winter 2023/Spring 2024

Citizen Science workshops in partnership with ZSL.

- Aimed at people who have never taken part in citizen science activities before.
- Targeting the Cranford community. An area of mixed ethnic heritage, high deprivation indexes and demographic churn.
- Targeted recruitment with community-based organisations.
- Workshops based in Meadowbank Adult Education College and green spaces in Crane valley, Cranford.
- AQA Unit Award for participants to evidence their participation. Currently awaiting approval from award body for a tailored award.
- Links to existing citizen science projects including those taking place in the Crane catchment.

Contact gaby.docker@lgoal.org.uk



Reaching new audiences – young people

Audiences for focus 2023/4 are:



Awesome Autumn Bat Activities

LET'S GO OUTSIDE AND LEARN

CIC Registration number 9435120

Half Term - Free Family Learning

Discover the truth about these fascinating, graceful creatures. Sessions involve learning what they look, how they feel and what they sound like compared to us humans. Plus, working out your wingspan if you were a bat, and bat themed craft activities.

Please note, adults must stay with their children and are responsible for their welfare.

24th October - Bridge House Pond, Feltham
10.30am-12noon
- Avenue Park, Cranford
2pm -3.30pm

26th October - Stonefield Park, Hillingdon
10.30 - 12noon

We're grateful for the support of



London Borough of Hounslow

Engaging young people in the catchment in 2023:

- **Family learning activities** Programme of 18 activities over the summer in 6 parks picked because of limited community engagement. 3 more planned for half term

Total of 164 attendances Adults 60 & children 104

72% BAME community members, 15% White, other incl Eastern European

- **Schools workshops with NCP**

4 visioning workshops with 4 secondary schools in catchment to understand their priorities and hopes for the catchment.

1st Crane Schools Forum 30th November 2023 Heathlands School to present findings and determine future actions. Other schools will get involved, please let us know if you have a good link with a school.

- **Curriculum linked activities**

6 sessions with Oriel Junior School, Feltham September 2023
Planning engagement sessions with Guru Nanak Academy, Hillingdon.

Sarah.Austin@lgoal.org.uk for families and schools project delivery.

Reaching new audiences – young people

5 main themes emerged at the schools visioning workshops with young people. We will be working with them to develop action plans.



1. Cleaner parks and rivers
2. Safety
3. A space for nature
4. Accessibility for all
5. Facilities



Reaching new audiences – health and wellbeing

PES 2023/24 focus is:

2023/4

AN ACTIVE AND HEALTHY
RIVER CORRIDOR.

Annual focus

HEALTH AND WELLBEING OF
PEOPLE AND THE
CATCHMENT.

Workstreams

Communications around
getting involved in volunteering
and citizen science, active
travel, mental health, mitigating
health risks.

- **12 things to do in the Crane Valley** has a focus on using the green/blue spaces to promote health and wellbeing. Promoted to public health teams in catchment.
- An audit and report about **green social prescribing in 2023** using green and blue spaces in the Crane catchment.
- Bring all green social prescribing providers and public health teams together January 2024 to **promote opportunities and good practice** (e.g. Friendly Parks for All project in Richmond.)
- Membership of Natural England **new Happier Outdoors network** for London. Plans to promote Crane catchment activities for festival planned March 2024 to launch network.
- Laura Brown
laura.brown@naturalengland.org.uk

Frances.bennett@lgoal.org.uk to get involved with the initiative.



Reaching new audiences – business

Building on work begun last year we are mapping business and industry in catchment to engage with them over the next year.



Cranebank, Heathrow Estate

Silvia.canalini@lgoal.org.uk to get involved with the initiative or if you have contacts.

Five different methods of engaging businesses have been identified:

- A **newsletter** to businesses to encourage their involvement in initiatives and practical interventions
- “**12 things to do in the Crane catchment for businesses**” – focus on health and wellbeing, how to get involved, things to do in your lunch hour, simple citizen science activities for individuals or groups of employees.
- **Encourage practical interventions** such as litter picking, balsam picking, planting or simple citizen science activities.
- **Link businesses to local community groups** to encourage joint working and collaboration over the long term. This method of engagement will explore the opportunities for corporate volunteering on small scale within the catchment.
- **Donations** e.g. to the Crane Fund, for community activities within the catchment.

Inclusive Access

Sustrans are working on plans for a Crane Valley Trail and looking at people walking and wheeling. Focus on those with protected characteristics, e.g. those using mobility aids, with buggies, or the elderly. They identified more than 200 access points to the river corridor, <10% could be considered accessible to all - barrier free, level surface and good width

Dan Kelly dan.kelly@sustrans.org.uk



Thank you for
listening!

Frances Bennett, Director
frances.bennett@lgoal.org.uk




www.lgoal.org.uk



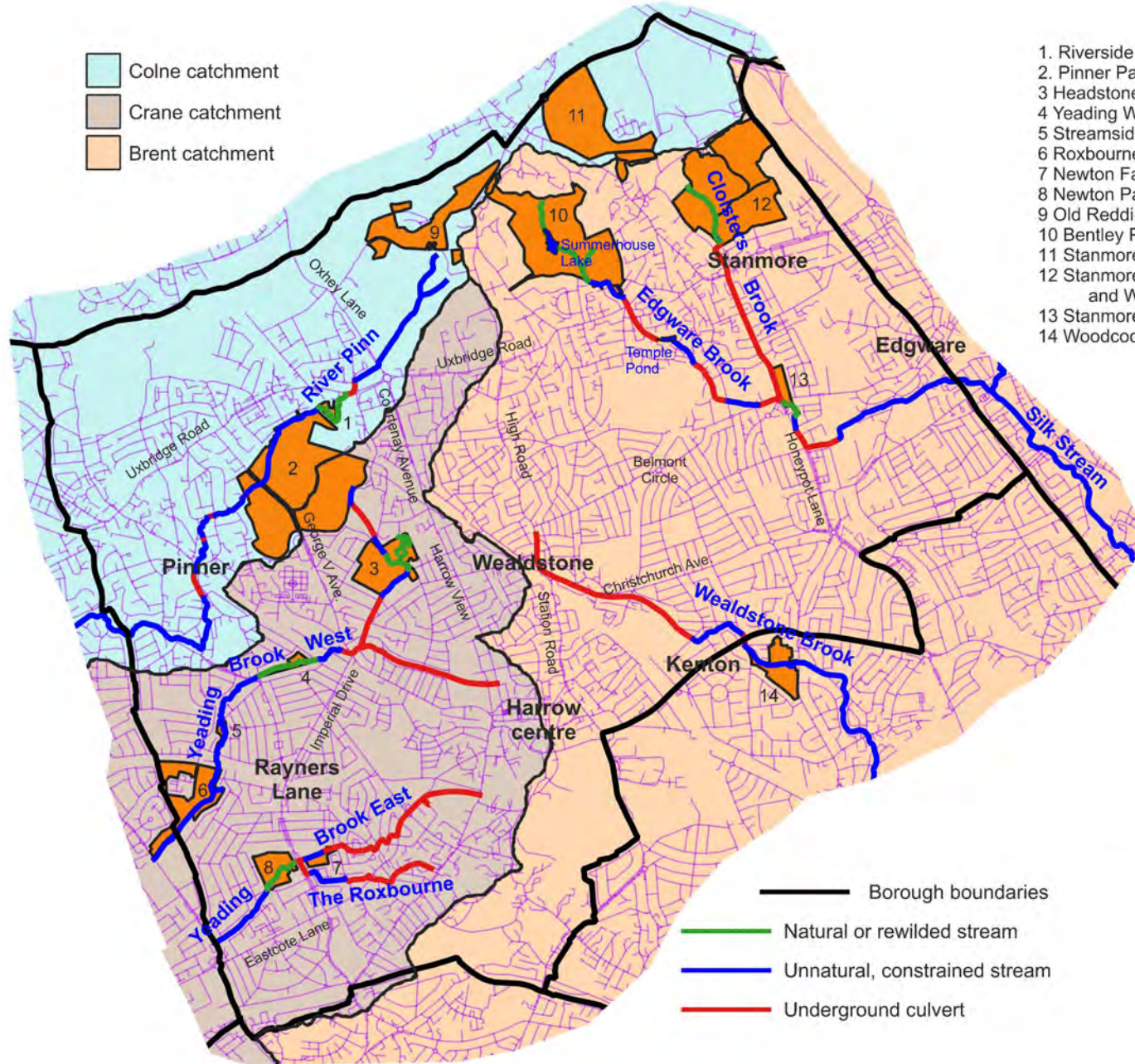
Harrow Streams: Leslie and Steve
Bolsover (HNCF)





Harrow's Streams project funded by Thames Water's Rivers and Wetlands Community Days initiative

- Outreach to increase knowledge of Harrow's streams, including making a map to go on our website and running public events such as walks and pond dipping.
- Chemical testing for ammonia and phosphate.
- Riverfly Monitoring: recruiting more volunteers, training them, providing equipment and establishing new testing locations.
- eDNA testing for Great Crested Newt.
- More advanced identification training for interested volunteers.
- Installation of secure tool store at Newton Farm.
- Purchase of tools for volunteers working in and alongside streams.

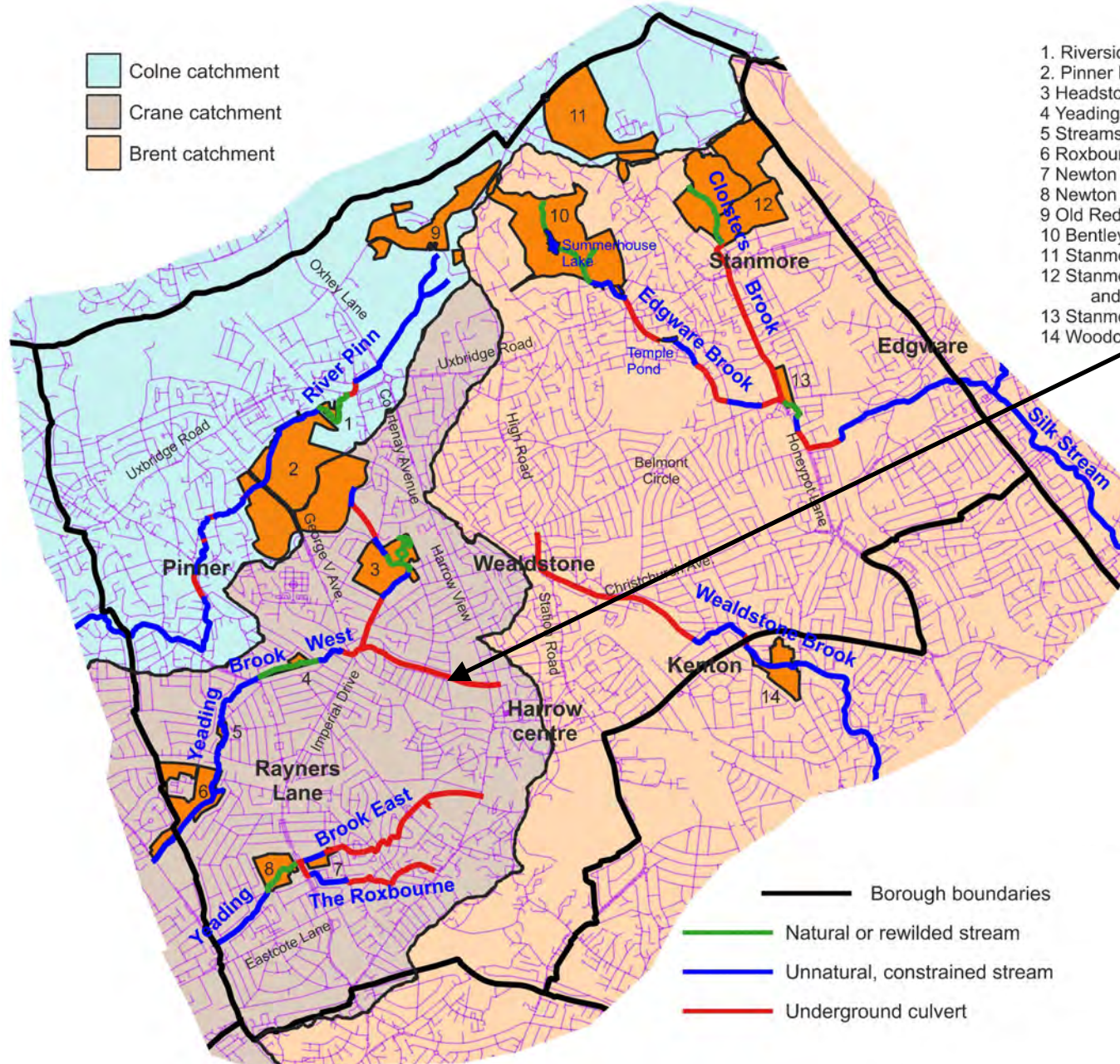
-  Colne catchment
-  Crane catchment
-  Brent catchment

1. Riverside Park
2. Pinner Park Farm
3. Headstone Manor Park
4. Yeading Walk
5. Streamside Open Space
6. Roxbourne Park
7. Newton Farm Ecology Park
8. Newton Park West
9. Old Redding Nature Reserve
10. Bentley Priory Nature Reserve
11. Stanmore Common
12. Stanmore Country Park and Wood Farm
13. Stanmore Marsh
14. Woodcock Park



-  Borough boundaries
-  Natural or rewilded stream
-  Unnatural, constrained stream
-  Underground culvert

- Colne catchment
- Crane catchment
- Brent catchment

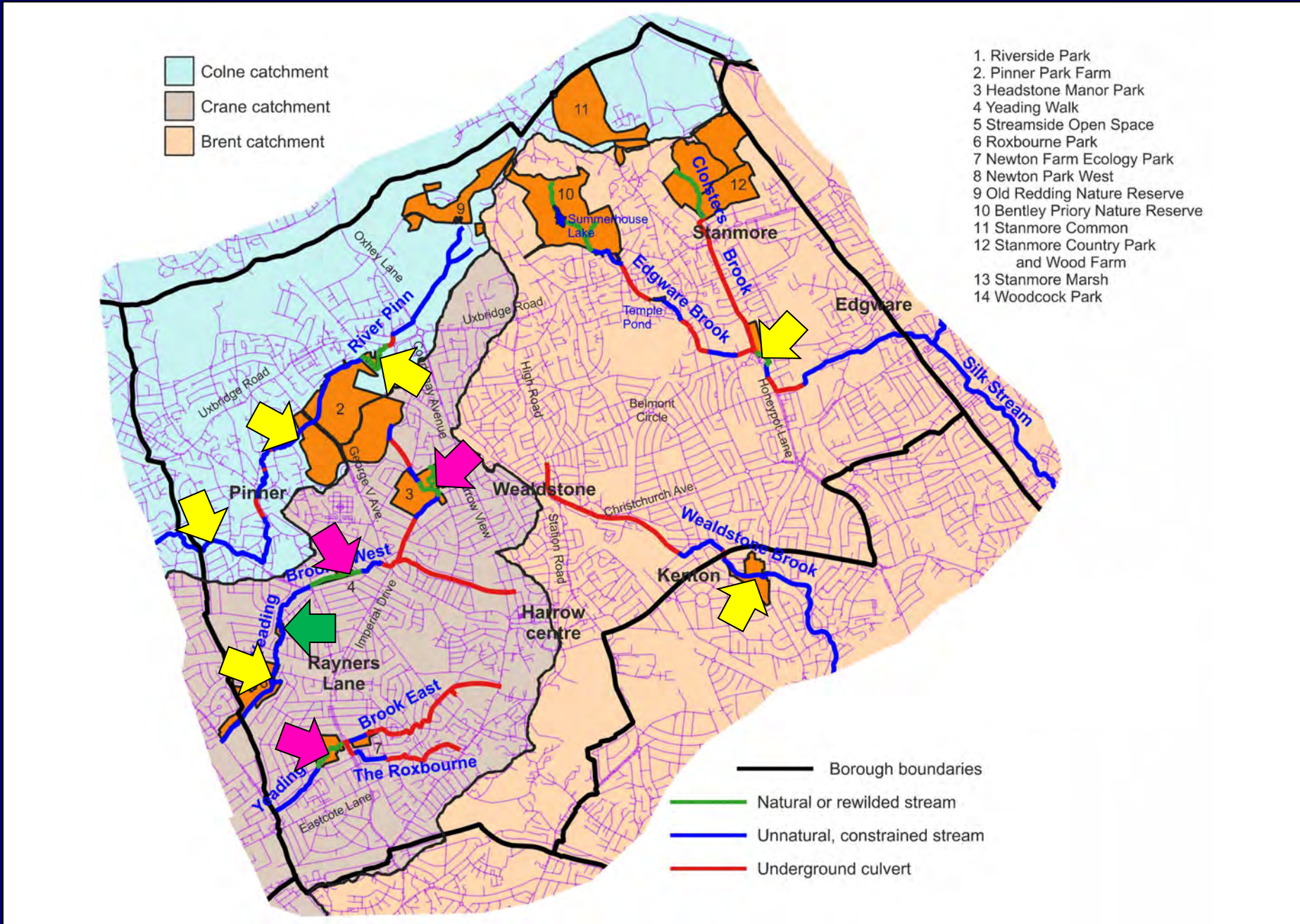


1. Riversid
2. Pinner F
3. Headsto
4. Yeading
5. Streams
6. Roxbour
7. Newton
8. Newton
9. Old Red
10. Bentley
11. Stanmd
12. Stanmd
- and
13. Stanmd
14. Woodc

- Borough boundaries
- Natural or rewilded stream
- Unnatural, constrained stream
- Underground culvert



Riverfly monitoring locations



← New site established

← Additional trained monitors

← Keen volunteers need training

eDNA for Great Crested Newt

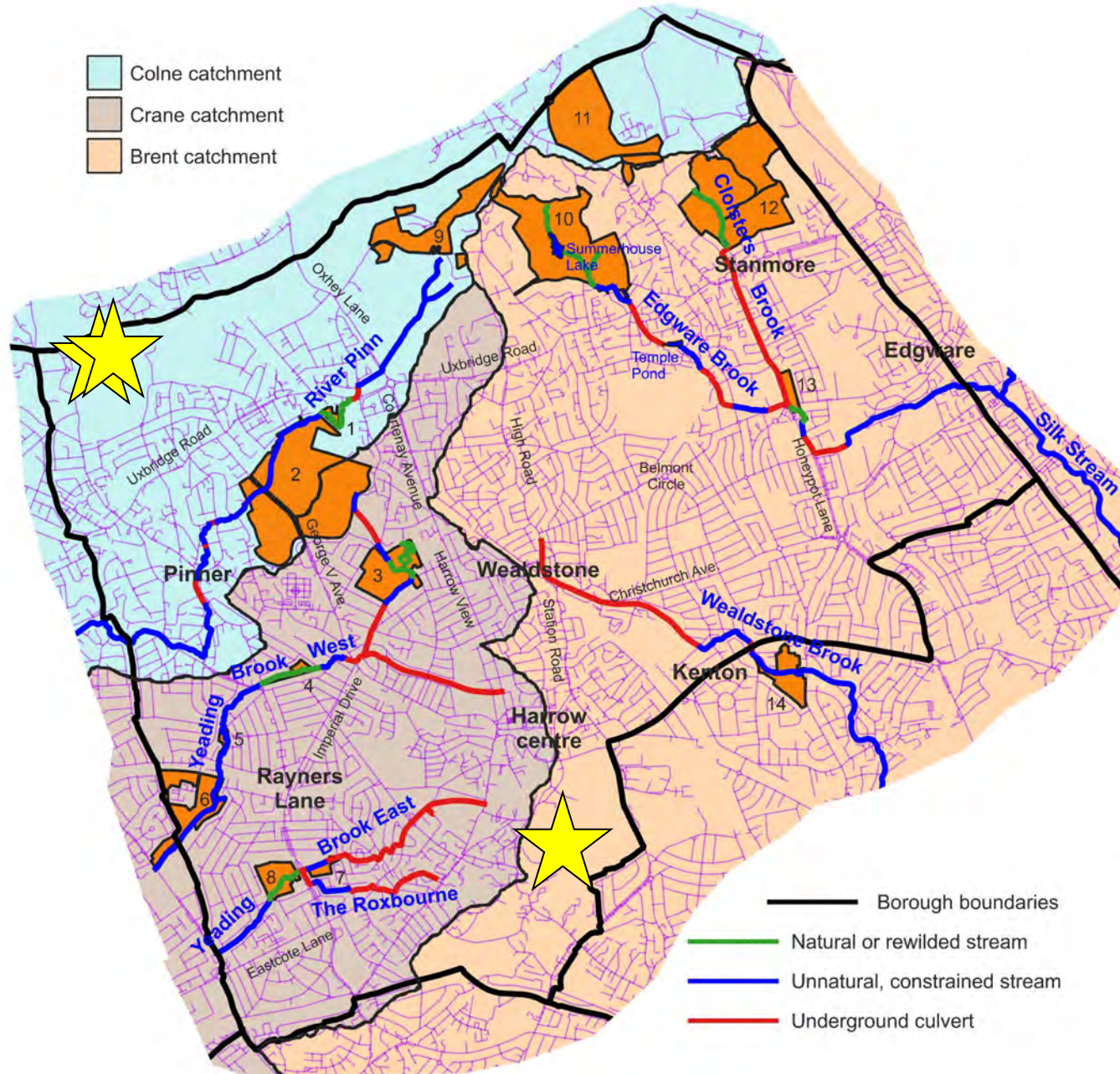



Image by Alexandre Roux
Creative Commons licence

Harrow's Streams project funded by Thames Water's Rivers and Wetlands Community Days initiative

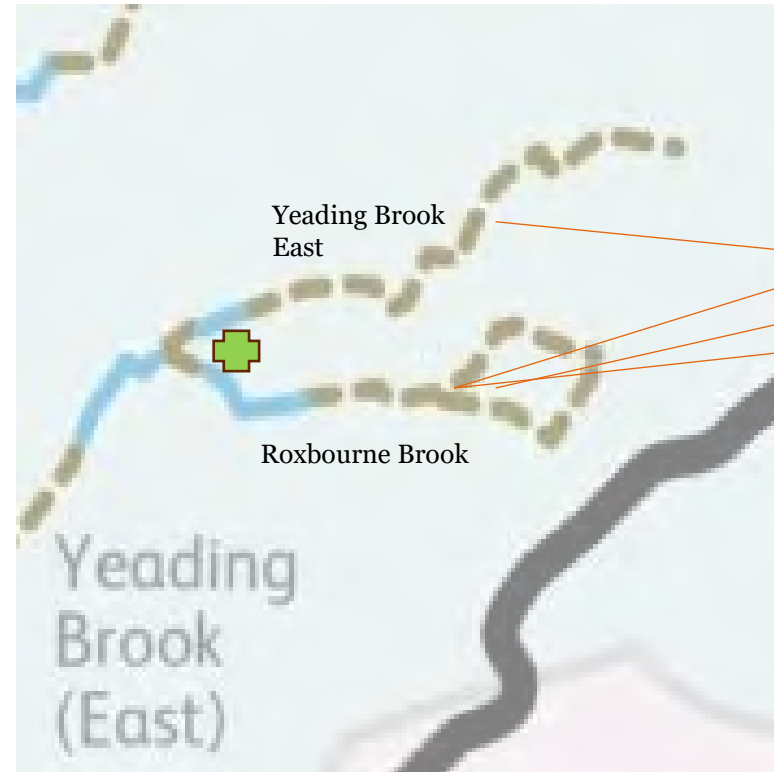
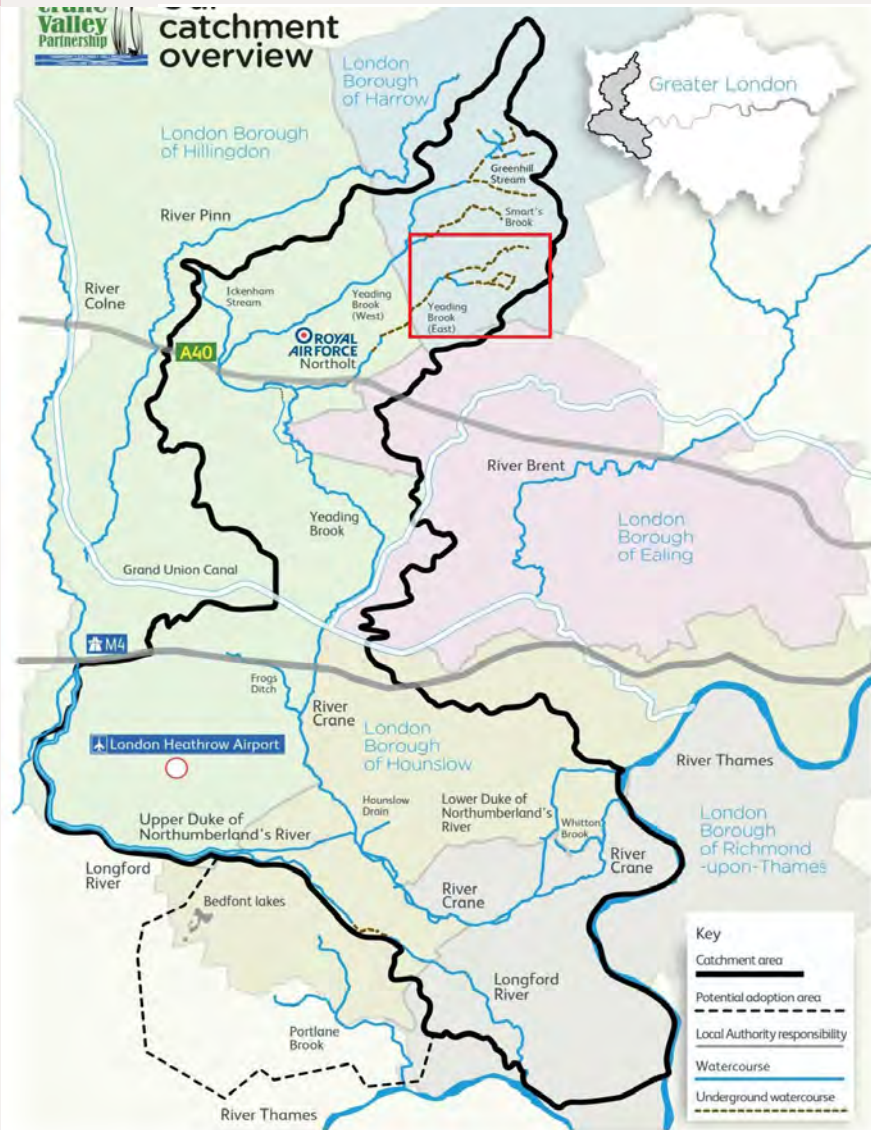
- Outreach to increase knowledge of Harrow's streams, including making a map to go on our website and running public events such as walks and pond dipping.
- Chemical testing for ammonia and phosphate.
- Riverfly Monitoring: recruiting more volunteers, training them, providing equipment and establishing new testing locations.
- eDNA testing for Great Crested Newt.
- More advanced identification training for interested volunteers.
- Installation of secure tool store at Newton Farm.
- Purchase of tools for volunteers working in and alongside streams.

A scenic view of a wetland area. In the foreground, there is a pond with reeds and water. The middle ground shows a grassy area with more reeds and a few people walking. In the background, there are large, leafy trees and a blue sky with white clouds.

Better Water a CVP grant, 2022/23

Newton Park West wetlands,
Roxbourne Brook
and Yeading Brook East, Harrow

A headwater of the Crane River



Environment

- Housing
- Automotive repair
- Fuel oil factory
- Historic gas works
- Major roads

“Consistently poor water quality”

“Lessens amenity for residents”



Better Water Project

Project based on recommendations from the 2019 report:

Investigation of sludge contamination in a manhole and Newton Park wetland, Harrow” – Dr N. Gilbert

“Further action is recommended to assess the potential of toluene to impact aquatic life by quantifying its concentration at time of deposition (immediately after heavy rain) and the frequency of deposition events. Additional action should ascertain if the silica-based engine oil factory, or any other local businesses upstream, use toluene in their activities. “

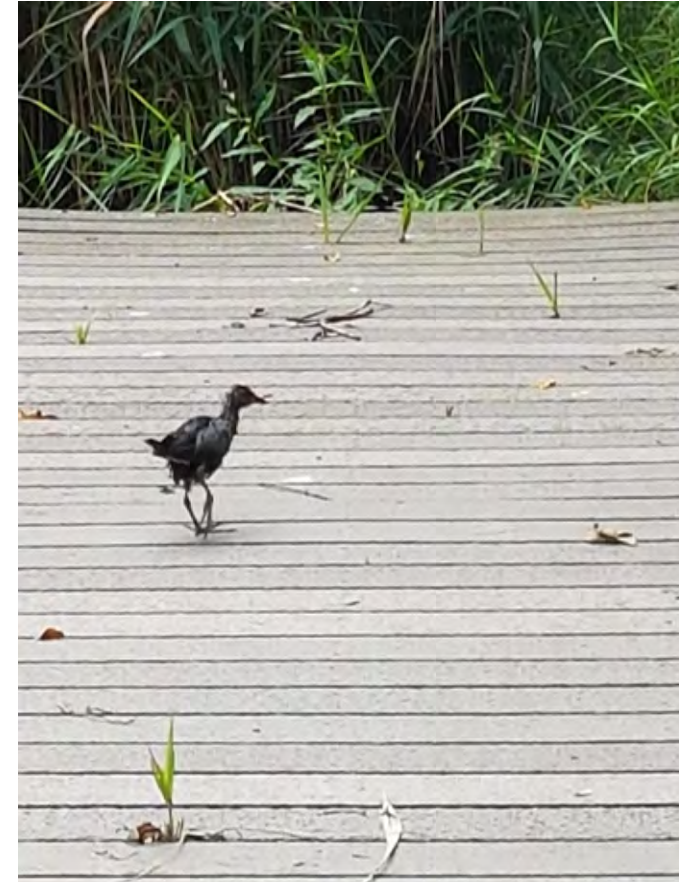
Three phase project

Resident’s survey – Testing – Monitoring

Carried out by: Newton Farm Ecology Park Volunteers

Findings

- ♦ **Resident's survey** both online and postal
- ♦ Majority report noticing pollution in the last 5 years with last 10 years a close second BUT long-term residents (20-30 years) more likely to report – always or never (!)
- ♦ 50/50 tie - Hard rain/Dry weather
- ♦ May fit a scenario of increasing pollution incidents or increased use of green space
- ♦ Resident's report equal concern for wildlife & their health – heartwarming!
- ♦ Survey fantastic for connecting people – facilitated one grand stand-up meeting



Findings

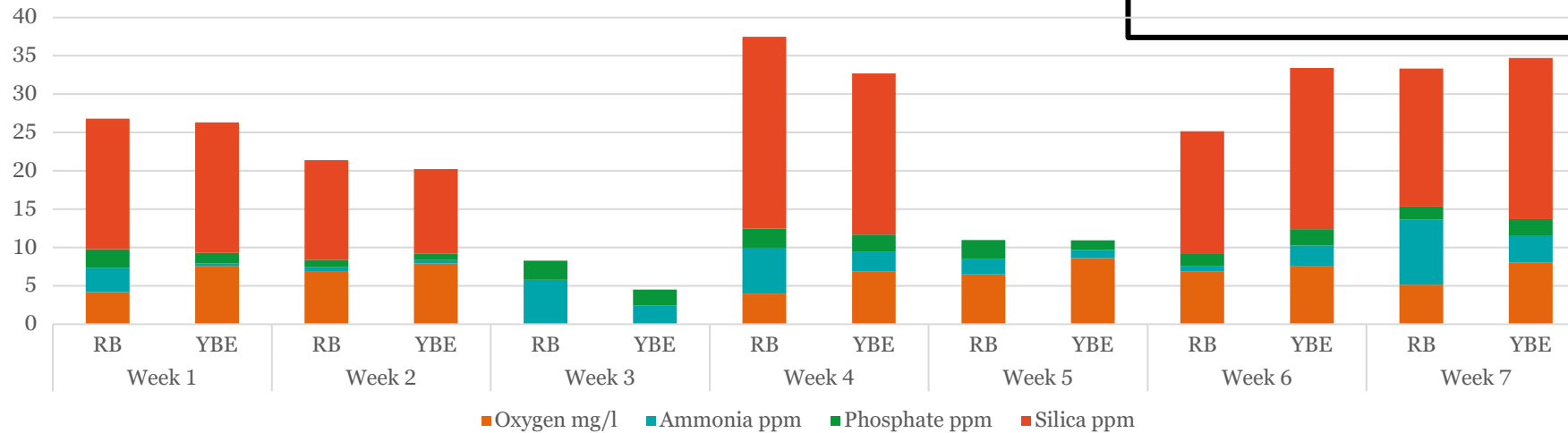


- ♦ **Testing** water and 1 sludge sample
- ♦ Toluene not found in any sample & sludge largely absent
- ♦ One sludge sample inconclusive for petro-chemical contamination
- ♦ Petro-chemical smell not tied to sludge or toluene – the contaminant is in the water
- ♦ Silica testing - Roxbourne Brook compared to Yeading Brook East generally show higher levels in Roxbourne Brook
- ♦ Weekly testing of Ammonia, Phosphate, Silica and Oxygen levels – establish patterns and trends

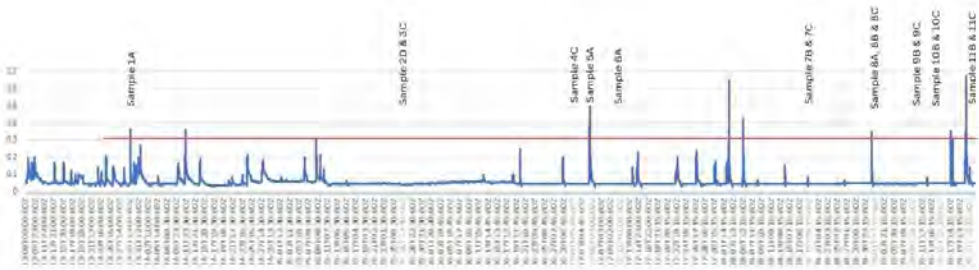
Monitoring

- Hard rain occurrence and appearance of black petro-chemical smelling water
- Water testing, ammonia, phosphate and silica
- Aquatic life
- Litter build-up

Yeading Brook East vrs Roxbourne Brook



Real time flood monitoring data for Harrow, Thistledeane station and sample dates
March 2023 - Sept 2023



Key

- A - Overflow pond - NFEP
- B - Yeading Brook East culvert NFEP
- C - Roxbourne Brook culvert, Rayners Lane
- D - Manhole 7 - Stanley Road

Notes

- Samples of the same number were taken on the same date.
- Rainfall above the red line resulted in an influx of creosote/petrol smelling water in NFEP and Newton Park West
- Water level data from <https://environment.data.gov.uk/flood-monitoring/archive>

Action in Hillingdon: Dragana
Knezevic (LB Hillingdon)



Volunteering in Hillingdon

Dragana Knezevic

Volunteers in Hillingdon

- Ruislip woods Volunteers
- Friends of Eastcote House Gardens
- Friends of Pinn Meadows
- Friends of Northwood REC
- Friends of Cranford Park
- TCV – Uxbridge Green Gym
- London Wildlife Trust volunteers
- Woodlarks and Waders





Challenges:

- **Setting up the group**
- **Continuity**
- **Advertising**
- **Weekday working**
- **Facilities**
- **Bureaucracy (constitution, opening bank account, etc.)**
- **H&S, liability insurance**
- **Funding**
- **Inclusion/diversity**



Types of volunteers:

- **Doers**
- **Students**
- **Surveyors**
- **Advisors**
- **Regular/local**
- **One off/event**

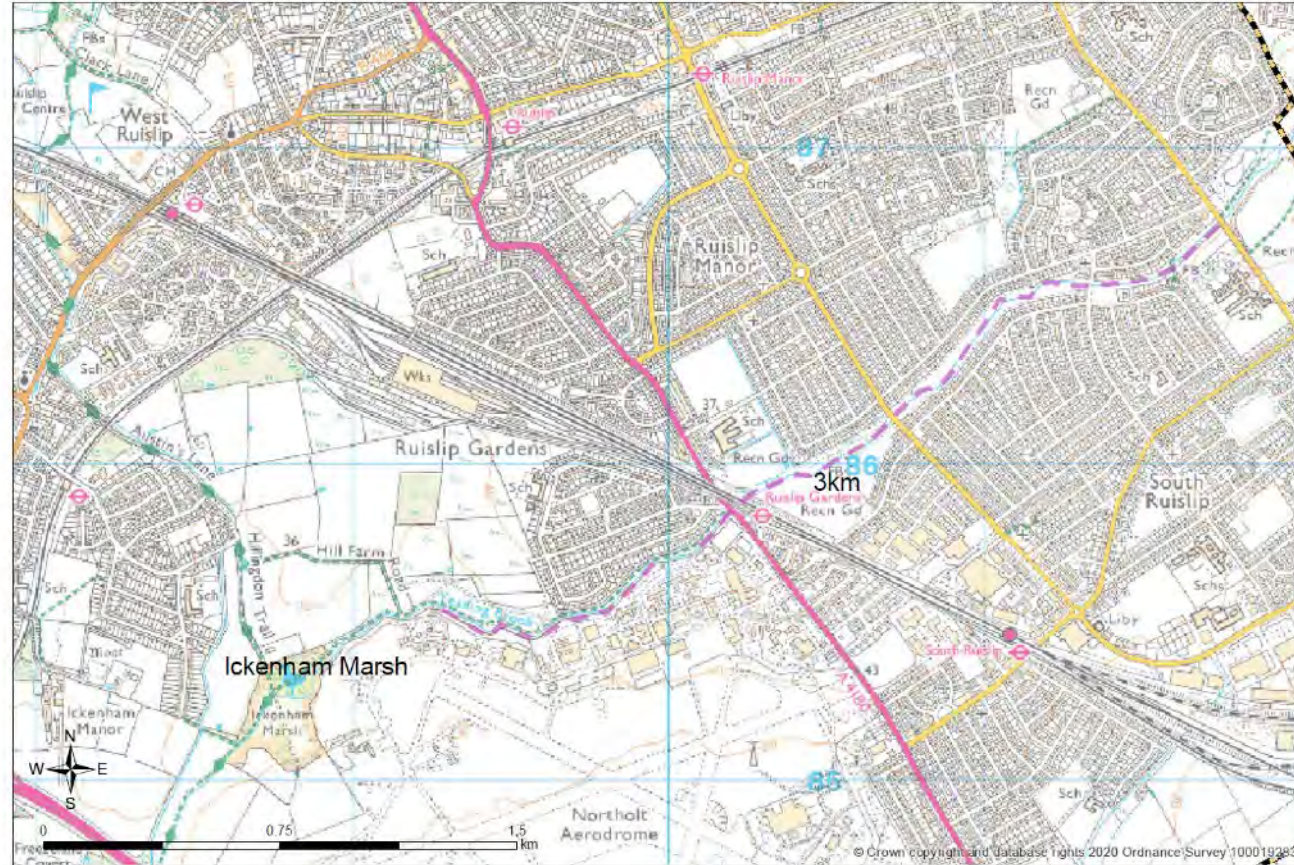
Volunteering in Yeading Brook/Crane

1. Rubbish removal from the Brook



Balsam Bash:

Balsam Bash Yeading Brook



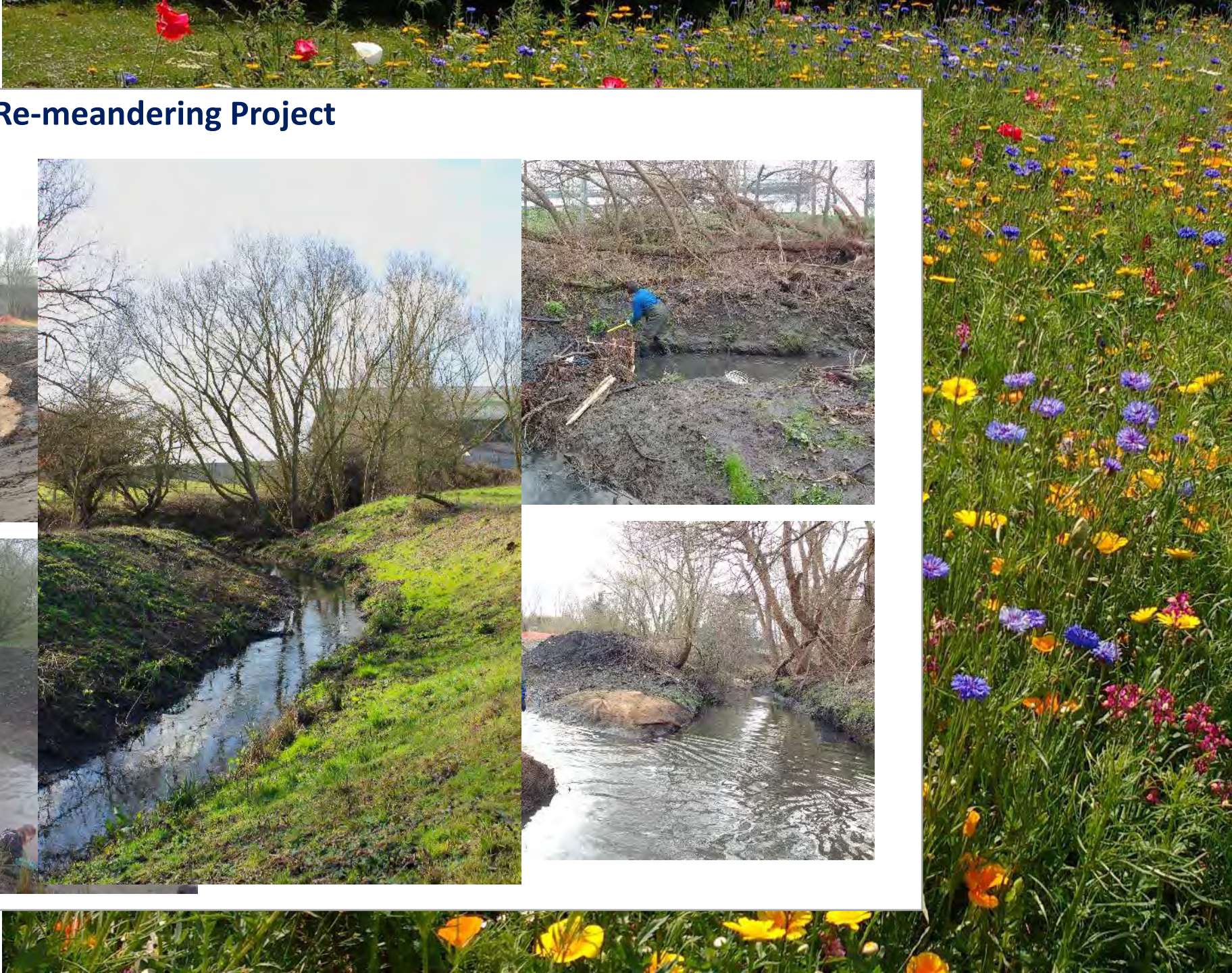
Wetland Projects: Elephant Park



Elephant Park- phase II



Stafford Road Open Space- Re-meandering Project



Other Projects:

- Tree planting
- Hedgelaying



Walks, survey and training



Maintenance

